

# CTC

New Student  
Celebration

Principal

Mr. Romberger

# DAILY SCHEDULE

## Half Day Programs

- Half-Day Programs (AM) 8:00 a.m. – 10:25 a.m.
  - Bus drop off at bottom of the hill
  - Bus pick up at bottom of the hill except for ELCO & Annville-Cleona is at the top of the hill
  - Parent drop off and pick up at top of the hill
  
- Half-Day Programs (PM) 11:30 a.m. – 2:00 p.m.
  - Bus drop off at top of the hill
  - Bus pick up at bottom of the hill
  - Parent drop off and pick up at top of the hill
  - NL dismissal is 1:45 p.m. and Annville-Cleona dismissal is 1:50 p.m.

# DAILY SCHEDULE

## Full Day Programs

- Full Day Programs 8:00 a.m. – 2:00 p.m.
  - Bus drop off at bottom of the hill
  - Bus pick up at bottom of the hill
  - Parent drop off and pick up at top of the hill
  - NL dismissal is 1:45 p.m. and Annville-Cleona dismissal is 1:50 p.m.

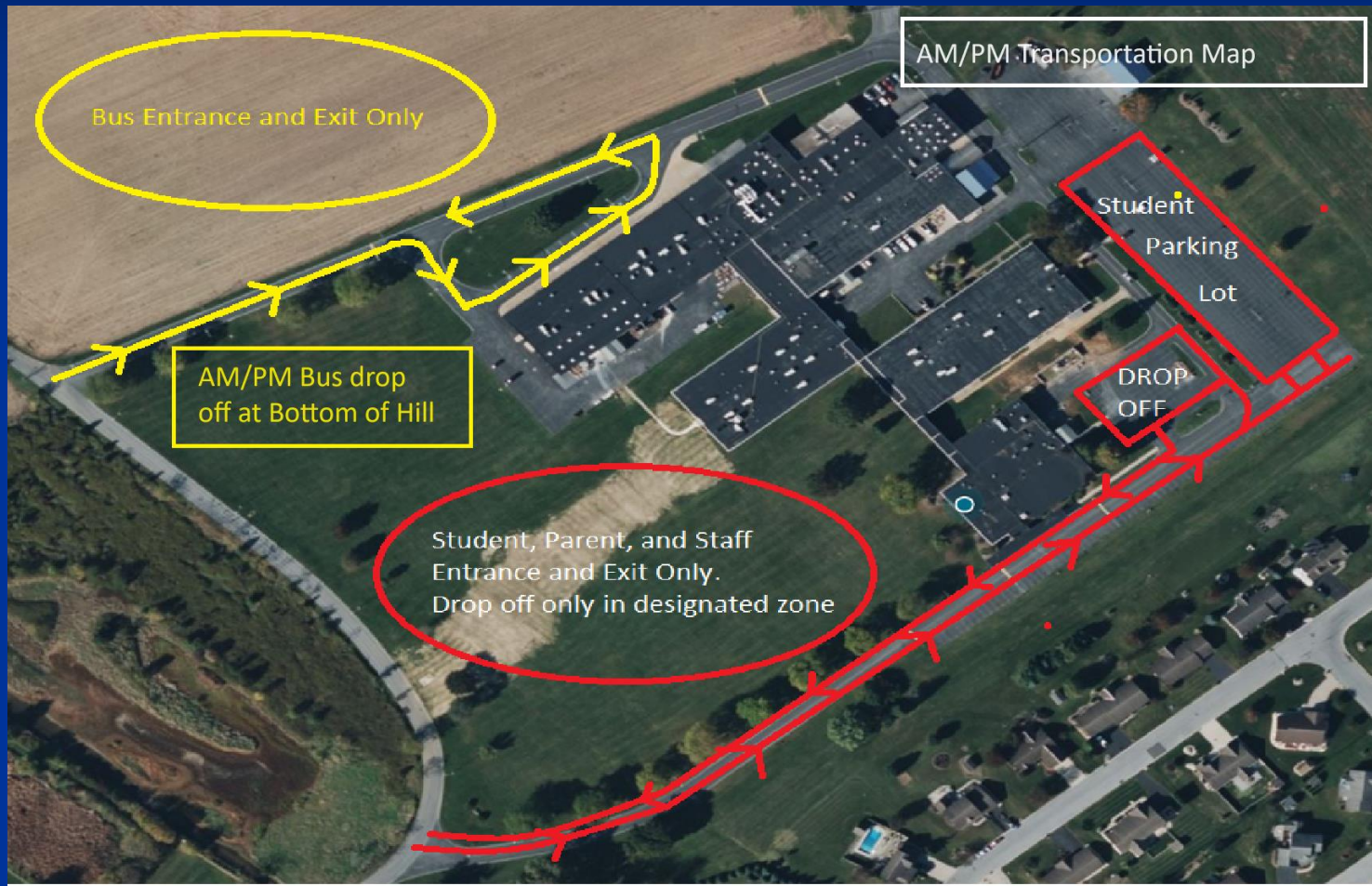
# Transportation

- All high schools provide transportation to and from CTC.
  - Students are dropped off at the bottom of hill in the AM
  - Students are picking up at the bottom of the hill in the AM except ELCO and Annville Cleon High Schools, who are picked up at the top of the hill
  - Students are dropped off at the top of the hill in the PM
  - Students are picked up at the bottom of the hill in the PM

# Drop Off & Pick Up

- Parents/Guardians are to drop off and pick up their child at the top of the hill in both the AM and PM.

# AM/PM Map



# Mid Day Map



# Drivers & Parking Permit

- Students are permitted to drive to CTC with a valid driver's license.
- Must purchase a parking pass for \$15
- Parking passes can be purchased in the first few weeks of school.
- Parking is a privilege and CTC reserves the right to revoke parking privileges at any time.

# Uniforms

- Students must adhere to uniform policy.
  - Students must arrive and leave in their program uniform unless otherwise given permission by the instructor.
- Link to purchase uniforms....  
<https://majorleague.ink/store/lcctc/>

# Grading

- 33.3%, Skill: Hands on Tasks
- 33.3%, Work Ethic: Attendance, Uniform, Safety
- 33.3%, Theory: Tests, Quiz

# Lunch

- Annville-Cleona High School and Full Day students are provided lunch at the CTC.
- Lunch pin will be provided to students the first day of school.
- Money can be added to a lunch account by either providing cash or a check written out to LCCTC and given to the cafeteria cashier.

# Counseling Services

## ■ School Counselors:

### ■ Mrs. Flowers

- Annville-Cleona
- Cedar Crest
- Palmyra

### ■ Ms. Tobias

- ELCO
- Lebanon
- Northern Lebanon
- All non-public schools

## ■ Services

- Personal/Peer Issues, Attendance Issues, Post Secondary Planning, Career Counseling, and Scholarships

# Attendance

- Mrs. Tiru, Attendance Secretary can be reached at [ktiru@lcctc.edu](mailto:ktiru@lcctc.edu) or 717-273-8551 ext. 2142
- Notes must be turned in within 3 days of absence for it to be excused.
- Late arrivals or early dismissals need to see Mrs. Tiru for a note.
- Educational Field Trips
  - Full Day students- approval by CTC Principal
  - Hal Day students- approval by sending High School

# Learning Resource Center

- Learning Resource Center Staff
  - Mr. Mehl, Special Populations Coordinator
  - Ms. Zimmerman, Special Education Facilitator
  - Ms. Robinson, Special Education Facilitator
  - Ms. Sanchez, Bilingual Aide
  - Mrs. Barry, Instructional Aide
- Services students with:
  - IEPs, 504s, ELL, Economically Disadvantaged

# Social Media & the CTC

- Yes, we're online!
  - Website: [www.lcctc.edu](http://www.lcctc.edu)
  - Facebook: [www.facebook.com/lcctc](http://www.facebook.com/lcctc)
  - Instragram: @lebanoncountyctc